

### Installing the RoadScan USB Driver.

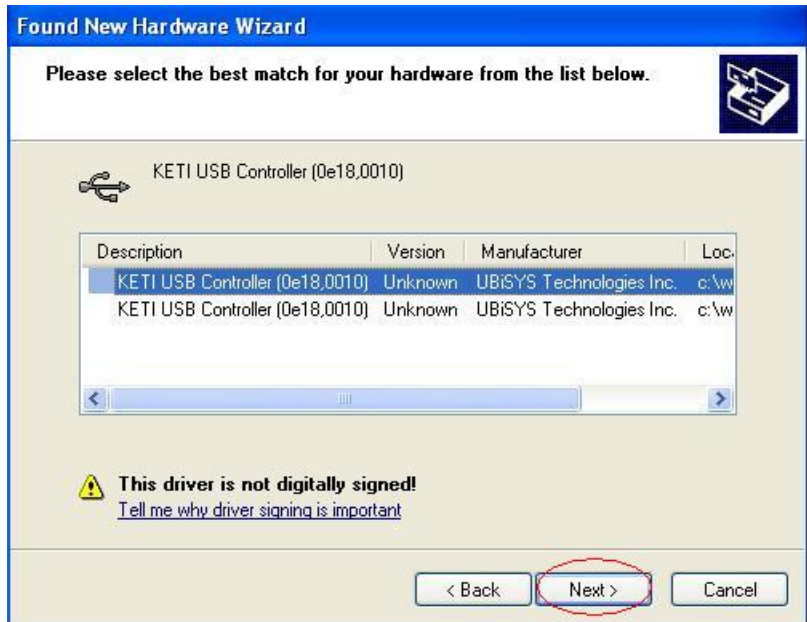
When you plug in the RoadScan into the USB port for the first time, you may be prompted by a screen as shown below:



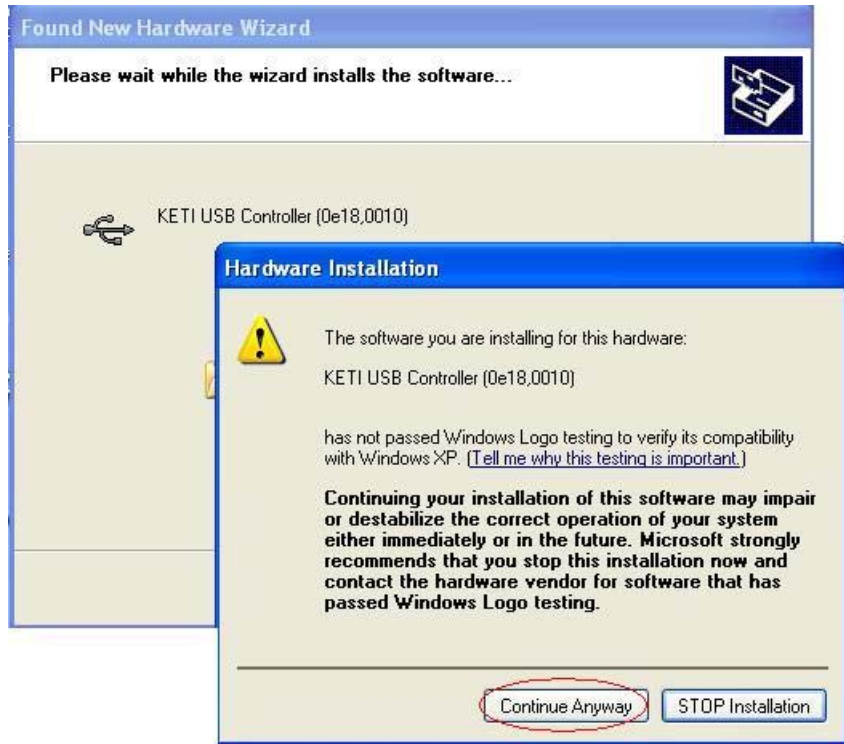
- Insert the RoadScan CD into your CD Drive
- Select “No, not this time”
- Click on the “Next” button.



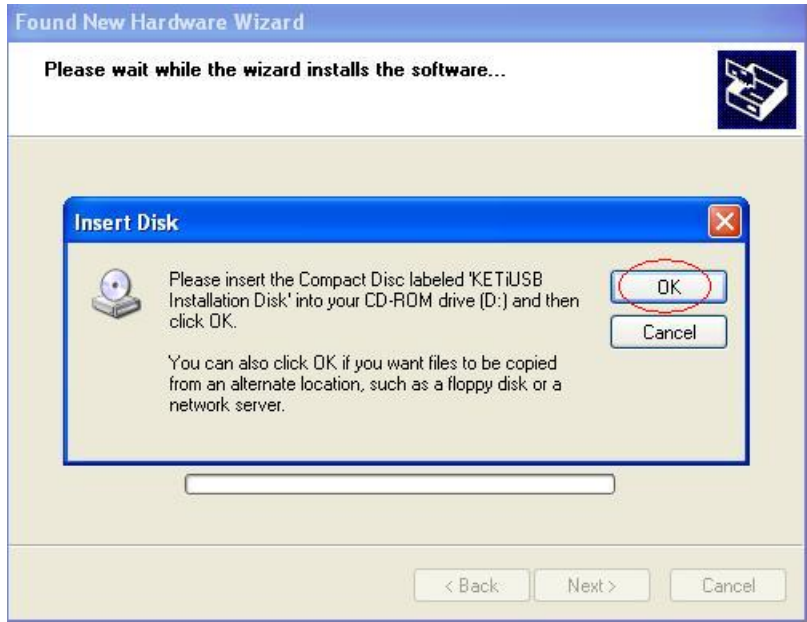
- Select “Install the software automatically”
- Click on the “Next” button



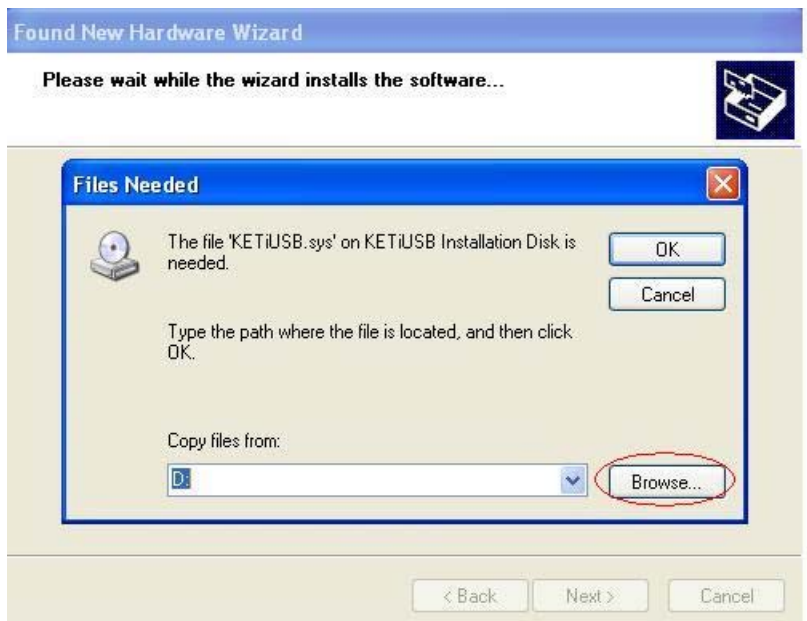
- Select one of the “KETI USB Controller...”
- Click on the “Next” button



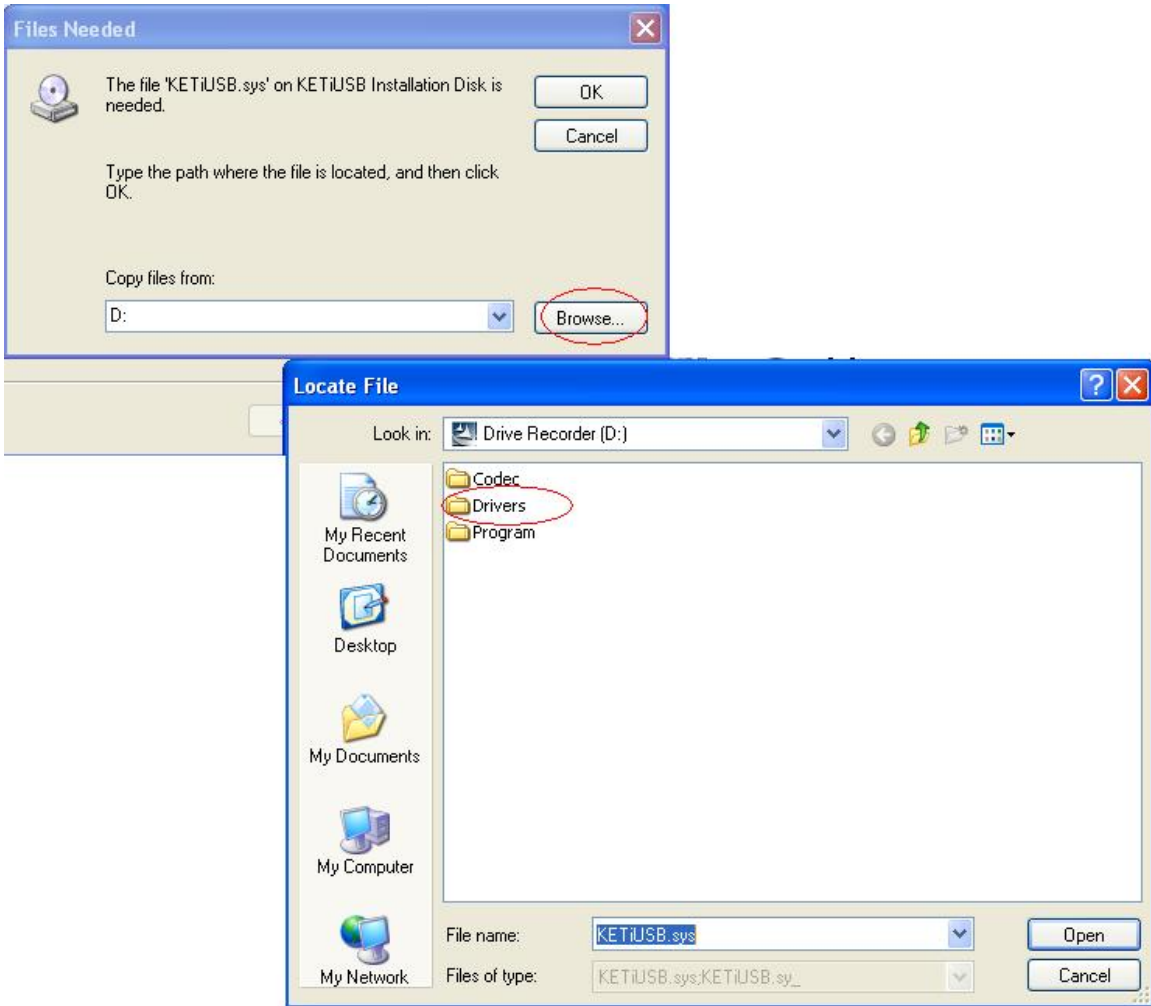
- Click on the “Continue anyway” button



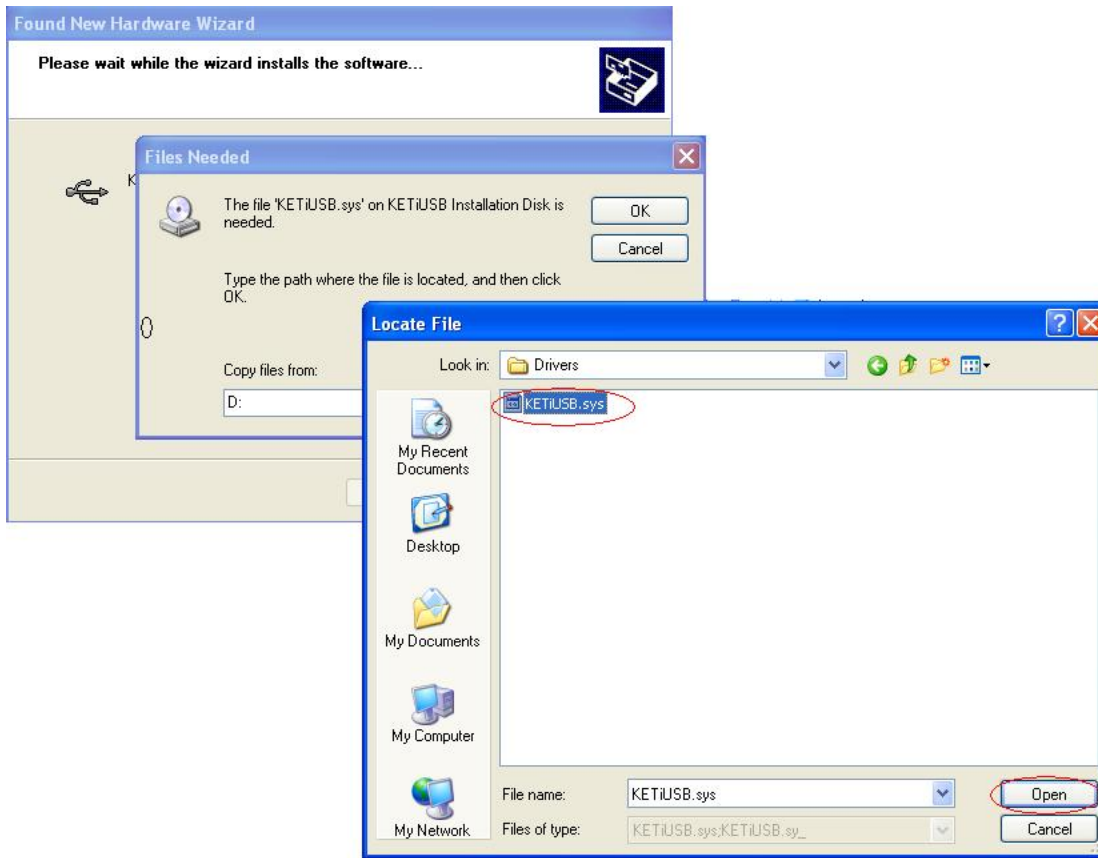
- Click on the “OK” button



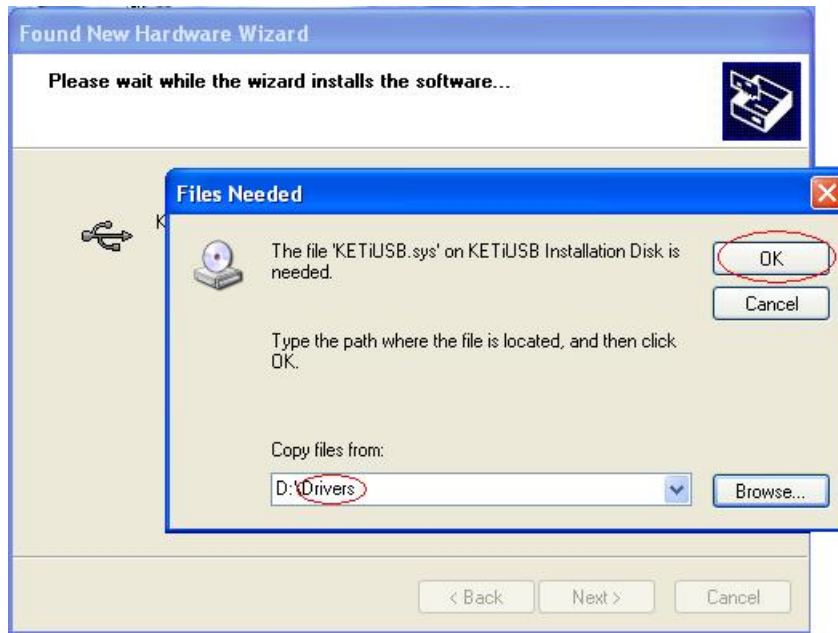
- Click on “Browse”  
Note: the “D:” drive may be different in your PC. This is your CD ROM drive.



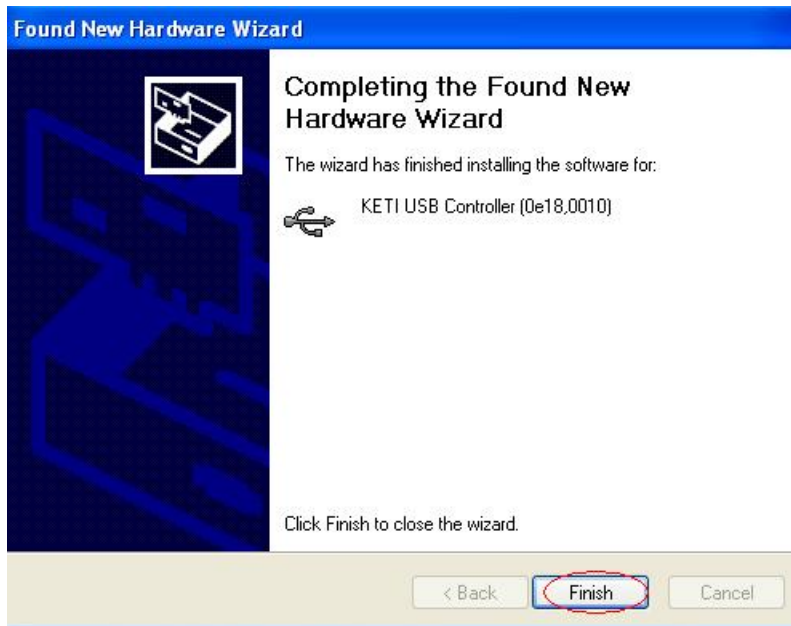
- Select the "Drivers" directory inside the CD ( by double-clicking on the "Drivers" folder )
- Click on the "Open" button



- Click on the “Open” button



- Click on the “OK” button ( nb: your PC may not be the D:\ drive, it depends on where your CD drive is located )



- Click on the "Finish" button